

# KIDS' CARDIGAN

■■■ Intermediate Knitting

## MEASUREMENTS

	years	2	4	6	8	10
To Fit Chest	cm	55	60	65	70	75
Actual Size	cm	61	67	72	78	83
Length	cm	38	42	46	50	54
Sleeve Length	cm	23	28	33	38	40

## PATONS JET 12 PLY 50g balls

Main Colour ( <b>M</b> – 823 Emerald)	3	4	5	5	6
1st Contrast ( <b>C1</b> – 828 Purple)	3	3	3	4	4
2nd Contrast ( <b>C2</b> – 827 Hot Pink)	2	2	3	3	3

Use only the yarn specified. Other yarns are likely to produce different results.

Quantities are approximate as they can vary between knitters. Check the ball bands to ensure all yarn is from the same dye lot.

## NEEDLES AND EXTRAS

- 1 pair each 5.00mm (UK 6) and 5.50mm (UK 5) knitting needles or size needed to give correct tension.
- wool needle for sewing seams.
- 5 buttons.

## TENSION

16.5 sts and 22 rows to 10cm over stocking st, using 5.50mm needles.

To work a tension square, using 5.50mm needles, cast on 25 sts.

Work 34 rows stocking st. Cast off loosely.

Check your tension carefully.

If less sts to 10cm use smaller needles, if more sts use larger needles.

For abbreviations and more information on knitting techniques, please see [patonsyarns.com.au](http://patonsyarns.com.au)

## SPECIAL ABBREVIATION

**yo** = wrap yarn around needle to make a stitch.

## BACK

Using 5.00mm needles and **C1**, cast on **54** (58-62-66-70) sts.

**1st row** – K2, \* P2, K2, rep from \* to end.

**2nd row** – P2, \* K2, P2, rep from \* to end.

Rep last 2 rows 4 times, dec **3** (1-1-1-1) sts evenly across last row ... **51** (57-61-65-69) sts, 10 rows rib in all.

Break off **C1**.

Change to 5.50mm needles and **M** for rem.

Work in stocking st until Back measures **24** (27-30-32-35) cm from beg, ending with a purl row.

### Shape Armholes –

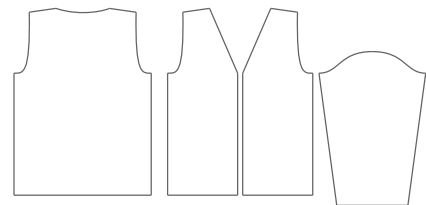
Cast off **2** (2-2-2-3) sts at beg of next 2 rows ... **47** (53-57-61-63) sts.

**Next row** – K3, sl 1, K1, pssso, knit to last 5 sts, K2tog, K3 ...

**45** (51-55-59-61) sts.

Dec one st (as before) at each end of every foll alt row until **43** (45-49-53-53) sts rem. \*\*

Work **23** (23-25-29-29) rows.



### Shape Back Neck and Shoulders –

**Next row** – K16 (17-18-20-19), cast off next **11** (11-13-13-15) sts, knit to end.

Cont on these **16** (17-18-20-19) sts for left side of back neck.

Dec one st at neck edge in next 2 rows.

**Next row** – Cast off **4** (5-5-6-5) sts, purl to last 2 sts, P2tog ... **9** (9-10-11-11) sts.

Cast off **4** (5-5-6-5) sts at beg of foll alt row.

Work 1 row.

Cast off rem **5** (4-5-5-6) sts.

With wrong side facing, join **M** to rem sts for right side of back neck.

Dec one st at neck edge in next row.

**Next row** – Cast off **4** (5-5-6-5) sts, knit to last 2 sts, K2tog ... **10** (10-11-12-12) sts.

**Next row** – P2tog, purl to end.

**Next row** – Cast off **4** (5-5-6-5) sts, knit to end.

Work 1 row.

Cast off rem **5** (4-5-5-6) sts.

## LEFT FRONT

Using 5.00mm needles and **C1**, cast on **26** (30-30-34-34) sts.

**1st row** – K2, \* P2, K2, rep from \* to end.

**2nd row** – P2, \* K2, P2, rep from \* to end.

Rep last 2 rows 4 times, dec **0** (2-0-2-0) sts evenly across last row ...

**26** (28-30-32-34) sts, 10 rows rib in all. Break off **C1**.

Change to 5.50mm needles and **M** for rem.

Work in stocking st until Left Front measures same as Back to beg of armholes, ending with a purl row. \*\*\*

### Shape Armhole and Front Slope –

Cast off **2** (2-2-2-3) sts at beg of next row ... **24** (26-28-30-31) sts.

**Next row** – Purl.

**Next row** – K3, sl 1, K1, pssso, knit to last 5 sts, K2tog, K3 ...

**22** (24-26-28-29) sts.

Dec one st (as before) at armhole edge in every foll alt row **1** (3-3-3-4) times, AT SAME TIME dec one st (as before) at front edge in every foll **2nd** (4th-4th-4th-4th) row **2** (5-7-5-7) times, **Sizes 2, 4, 8 and 10 only** – then in every foll **4th** (6th-6th-6th) row **5** (1-2-1) times.

**All sizes** ... **14** (15-16-18-17) sts.

Work **3** (5-5-5-5) rows.

### Shape Shoulder –

**Next row** – Cast off **4** (5-5-6-5) sts, knit to last 5 sts, K2tog, K3.

Cast off **4** (5-5-6-5) sts at beg of foll alt row.

Work 1 row.

Cast off rem **5** (4-5-5-6) sts.

## RIGHT FRONT

Work as for Left Front to \*\*\*.

Work 1 row.

### Shape Armhole and Front Slope –

Cast off **2** (2-2-2-3) sts at beg of next row ... **24** (26-28-30-31) sts.

**Next row** – K3, sl 1, K1, pssso, knit to last 5 sts, K2tog, K3 ...

**22** (24-26-28-29) sts.

Dec one st (as before) at armhole edge in every foll alt row **1** (3-3-3-4) times, AT SAME TIME dec one st (as before) at front edge in every foll **2nd** (4th-4th-4th-4th) row **2** (5-7-5-7) times, then in every foll **4th** (6th-6th-6th-6th) row **6** (2-1-3-2) times ... **13** (14-15-17-16) sts.

### Shape Shoulder –

Cast off **4** (5-5-6-5) sts at beg of next row and foll alt row.

Work 1 row.

Cast off rem **5** (4-5-5-6) sts.

## SLEEVES

Using 5.00mm needles and **C1**, cast on **38** (38-38-42-42) sts.

**1st row** – K2, \* P2, K2, rep from \* to end.

**2nd row** – P2, \* K2, P2, rep from \* to end.

Rep last 2 rows 4 times, dec **2** (0-0-2-2) sts evenly across last row ...

**36** (38-38-40-40) sts, 10 rows rib in all. Break off **C1**.

Change to 5.50mm needles.

### Beg Stripe Patt –

**NOTE** – When working stripes, do not break off colour when not in use but carry yarn loosely along side edge of work until required again, catching in on alt rows to avoid long strands.

Work in stocking st stripes of 8 rows **C2** and 2 rows **M** for rem, AT SAME TIME inc one st at each end of 9th row once, then in every foll **16th** (20th-20th-24th-26th) row until there are **40** (42-44-46-46) sts.

Cont without further shaping until Sleeve measures **23** (28-33-38-40) cm from beg, ending with a purl row.

### Shape Top –

Keeping stripe patt correct, cast off **1** (1-1-1-2) sts at beg of next 2 rows ... **38** (40-42-44-42) sts.

**Next row** – K3, sl 1, K1, pssso, knit to last 5 sts, K2tog, K3 ... **36** (38-40-42-40) sts.

Dec one st (as before) at each end of every foll alt row until **26** (26-28-28-26) sts rem.

**Next row** – P3, P2tog, purl to last 5 sts, P2tog tbl, P3.

Dec one st (as before) at each end of every row until **20** (20-22-22-20) sts rem.

Cast off 2 sts at beg of next 2 rows, then 3 sts at beg of foll 2 rows.

Cast off rem **10** (10-12-12-10) sts.

## FRONT BAND AND COLLAR

Using 5.00mm needles and **C1**, cast on **7** (7-9-9-9) sts.

**1st row** – K2, \* P1, K1, rep from \* to last st, K1.

**2nd row** – P2, \* K1, P1, rep from \* to last st, P1.

Last 2 rows form rib.

Work a further 2 rows rib.

**5th row** – Rib **2** (2-3-3-3), rib 2tog, **yo**, rib to end ... buttonhole.

Work **9** (11-11-13-15) rows.

Rep last **10** (12-12-14-16) rows 3 times, then buttonhole row once ... 5 buttonholes.

Work 3 rows.

### Beg Collar Shaping –

Working inc sts into rib patt, inc one st at end (neck edge) of next row, then in every foll alt row until there are **17** (21-25-27-29) sts, then at same edge in every row until there are **28** (28-30-32-32) sts.

Work **8** (8-10-12-12) rows.

### Beg Turnings –

**NOTE** – When pattern specifies **turn** – proceed as folls to avoid holes in your work. Take yarn under needle and onto other side of work, slip next st onto right-hand needle, take yarn back to original position, slip st back onto left-hand needle, then turn and proceed as instructed in the pattern.

**1st row** – Rib **23** (23-23-25-25), **turn**.

**2nd row** – Rib to end.

**3rd row** – Rib across all sts.

**4th row** – As 3rd row.

**5th row** – Rib **13** (13-13-15-15), **turn**.

**6th row** – As 2nd row.

**7th row** – As 3rd row.

**8th row** – Rib across all sts.

Rep last 8 rows 7 times, then 1st and 2nd rows once.

Work **8** (8-10-12-12) rows across all sts.

Dec one st at end (neck edge) of next row, then at same edge in every row until **15** (19-23-25-27) sts rem, then in every foll alt row until **7** (7-9-9-9) sts rem.

Work **47** (55-55-63-71) rows.

Cast off loosely in rib.

## PATCH POCKETS (MAKE 2)

Using 5.50mm needles and **C1**, cast on **5** (5-7-9-11) sts.

Knit 1 row.

**Next row** – Cast on 2 sts, purl to last st, inc in last st ... **8** (8-10-12-14) sts.

**Next row** – Cast on 2 sts, knit to last st, inc in last st ... **11** (11-13-15-17) sts.

Inc one st at each end of next row ... **13** (13-15-17-19) sts.

Cont in stocking st until Pocket measures **6** (6-7-8-9) cm from beg, ending with a purl row and **dec** (dec-**inc**-dec-**inc**) one st in last row ... **12** (12-16-16-20) sts.

**Next row** – K3, \* P2, K2, rep from \* to last st, K1.

**Next row** – P3, \* K2, P2, rep from \* to last st, P1.

Cast off loosely in rib.

## TO MAKE UP

**NOTE** – We recommend using mattress stitch to sew up your cardigan.

**DO NOT PRESS.** Join shoulder seams. Placing centre of collar to centre back neck and shaped edge to garment, sew on front band and collar piece. Placing centre of sleeve to shoulder seam, sew in sleeves evenly. Join side and sleeve seams. Sew patch pockets in position as pictured. Sew on buttons.

 Patons

Level 7  
409 St Kilda Road  
MELBOURNE VICTORIA 3004  
A.B.N 85 055 366 590

**T** +61 3 9380 3888

**F** +61 3 9820 0989

[patonsyarns.com.au](http://patonsyarns.com.au)

 /auspinners

### Assistline

(Melbourne, Australia.)  
+61 3 9380 3888

### Toll Free

(Within Australia –  
Outside Melbourne.)  
1800 337 032

We have made every effort to ensure that these instructions are accurate and complete. We cannot be responsible for variations in individual work, human error or if yarn other than the recommended Patons yarn is used. This publication is protected by copyright. Patons Jet 12 ply is a trade mark of Australian Country Spinners Pty Ltd. Yarn colours shown may vary slightly due to the printing process and different monitor settings.